



Northumberland
County Council

Empowering Communities: community-centred approaches to improving wellbeing and health in Northumberland

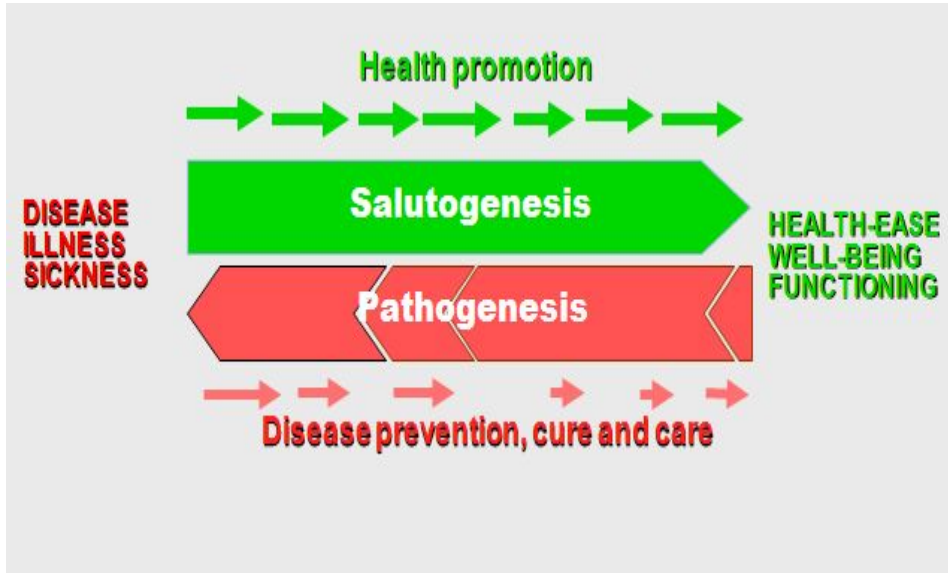
Local Area Council meetings

November 2018

Liz Morgan, Director of Public Health
Dr Jim Brown, Consultant in Public Health

www.northumberland.gov.uk

The need for a cultural shift



- Away from single issue, individual lifestyle change
- Focus on what makes us **well** and **wellbeing**
- Building on the **positives (our assets)**
- Working **with communities** rather than doing to
- **Salutogenesis** rather than pathogenesis

So what does this different approach look like?

Drivers for change

National

The Care Act 2014 - putting wellbeing at the heart of care and support

NHS Five Year Forward View (5YFV) - empowering patients, engaging communities

General Practice Forward View (2016) - community-based support

5YFV Mental Health - importance of mental, physical and **social** needs

Cross-Government Loneliness strategy (2018)

Local

STP/ICS - upscaling prevention, health and wellbeing (social prescribing)

(Draft) Joint Health and Wellbeing Strategy - empowering people and communities

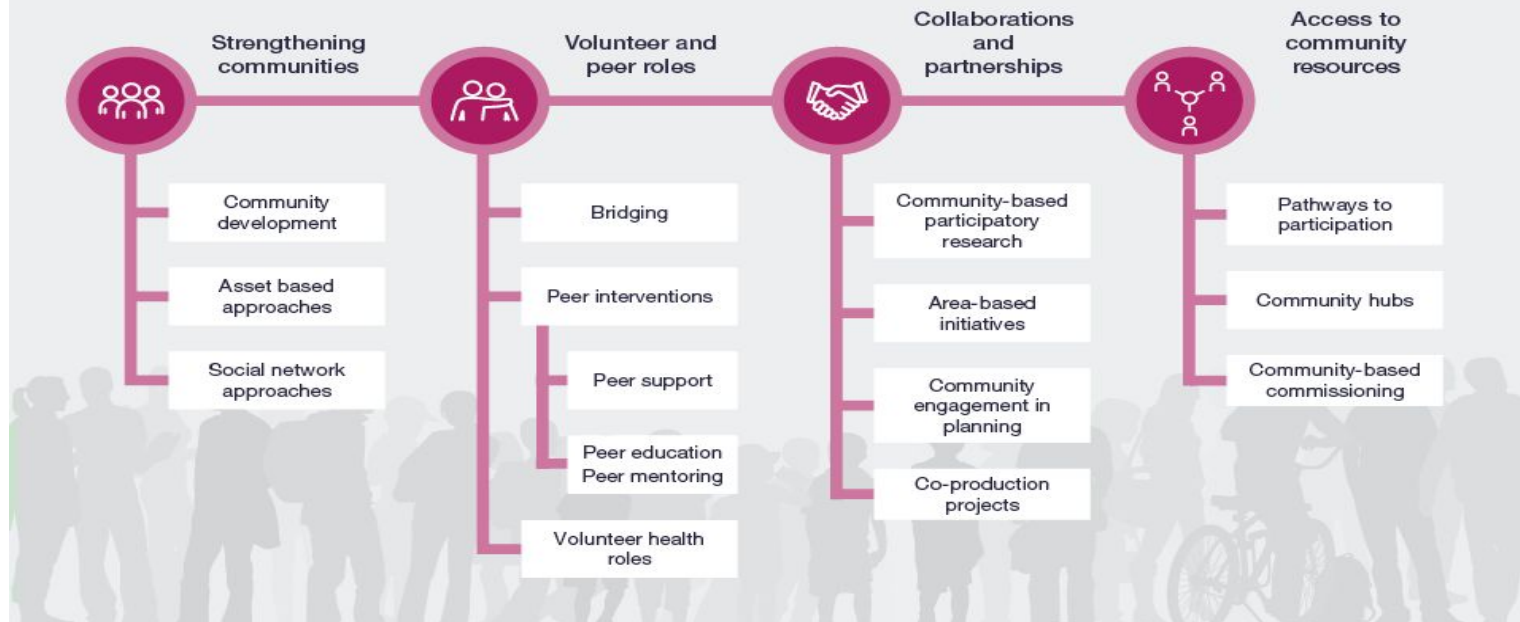
Director of Public Health Annual Reports 2015 and 2016

NCC Corporate Plan

CCG Operational Plan / NHCFT Prevention Strategy



The family of community-centred approaches



What are the benefits and risks?



- Adequate **social relationships** lead to a greater likelihood of survival
- **Volunteering** is strongly associated with better health & wellbeing outcomes
- Effective in improving **health behaviours**, **self-efficacy** & **social support**
- Positive impacts on **housing**, **crime**, **social capital** & **community empowerment**
- Potential harms - **burnout** of volunteers & **barriers** to groups already at risk of social exclusion

Overview - Empowering Communities project (2.5 years)

- **Locality Coordinators** embedded within VCS/not for profit **Host Organisations**
 - One in each of five Local Area Council areas
 - Initially role to map and mobilise assets with a view to recommending approaches to improving wellbeing and health that are priorities for the communities and other stakeholders in the locality.
- **Grants for community-centred approaches**
 - Informed by the work of the locality coordinators
 - Available from 2019 for VCS organisations to apply from a range of options:
 - Community development
 - Community navigators and connectors, link workers or local area coordinators, or other social prescribing initiatives
 - Self-management education or peer support
 - Community asset transfer
 - Micro-grants, including to support volunteering

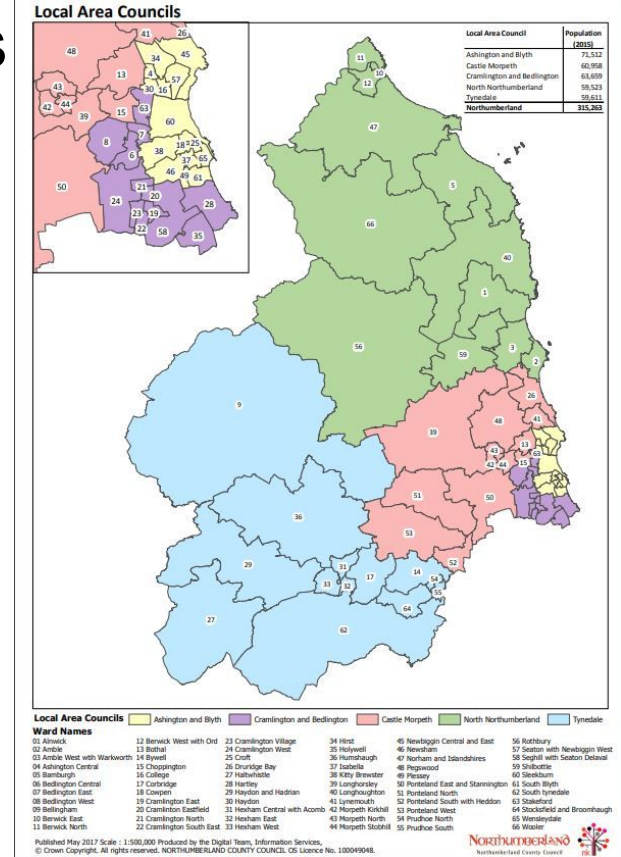


Objectives - Empowering Communities project

- To maximise participation of communities and stakeholders in developing, delivering and evaluating locality-specific approaches
- To map and mobilise existing assets within communities, develop new and existing assets, and link people to assets, including those to address socioeconomic determinants of health
- To increase individual and community participation (including volunteering), involvement in decision making, and feelings of control and confidence
- To increase community activity, social networks and social capital
- To create sustainable benefits for individuals and communities

Locality coordinators... first 6 months

- Build links with communities and wider stakeholders in locality
- Map and mobilise the knowledge, skills and time of individuals and the resources ('assets') within communities, develop new and existing assets, and link people to assets
- Use participatory methods with communities and wider stakeholders in that locality to find out what would strengthen those assets
- Support existing or set up new locality network(s) and forums
- Explore with communities the need for and best way of developing a county-wide directory of groups, organisations and services that includes locality specific information
- Agree with communities and other stakeholders the best approach(es) for that locality



Locality coordinators... from 6 months

- Support implementation of agreed recommendations
- Support groups/organisations to secure grants from range of options
- Sustain locality networks and directory/ies
- Coordinate and link activities within the locality
- Adopt other principles of Local Area Coordination:
- Build sustainable local, non-service solutions to support needs
- Develop community leadership
- Support evaluator in carrying out a locality based evaluation

Roles of Host Organisations



- Support recruitment of Locality Coordinator in locality
- Geographical base for Locality Coordinator
- Embed Locality Coordinator within team/organisation
- Support and co-deliver asset mapping
- Link to existing networks and share knowledge of communities
- Help to promote cultural change towards asset-based, community-centred approaches
- Support the Locality Coordinator to engage with the communities in the locality
- Support sustainability of the model and own organisation
- Support the evaluation, including 'peer researcher' model

Where are we now?

Host organisations

- Ashington and Blyth: Northumberland Community & Voluntary Action (NCVA)
- Castle Morpeth: Community Action Northumberland
- Cramlington, Bedlington and Seaton Delaval: Active Northumberland
- North Northumberland: Bell View
- Tynedale: Hexham Community Partnership

Locality coordinator recruitment

- Recruited to 4 out of 5 localities - started November 2018
- Recruiting to the fifth locality coordinator post (North)

Our ask of the Local Area Councils

1. Help the Locality Coordinator to identify your communities' assets
 - Skills/knowledge/commitment of community members
 - Local groups & organisations, informal networks
 - Physical, environmental and economic resources
 - Assets of external agencies
2. Work with the Locality Coordinator and your communities to identify needs, build on aspirations and link assets to strengthen individuals and your community

Any Questions?

